

# MASSACHUSETTS DEPARTMENT OF TRANSPORTATION HIGHWAY DIVISION

NORTON  
ROUTE 123 AT N-S WORCESTER STREET

STATE	FED. AID PROJ. NO.	SHEET NO.	TOTAL SHEETS
MA	-	1	11
PROJECT FILE NO.		609193	

PRELIMINARY RIGHT OF WAY  
TITLE SHEET & INDEX

PLAN AND PROFILE OF  
INTERSECTION IMPROVEMENTS  
ROUTE 123 AT NORTH AND SOUTH WORCESTER STREET

IN THE TOWN OF  
NORTON  
BRISTOL COUNTY  
PRELIMINARY RIGHT OF WAY

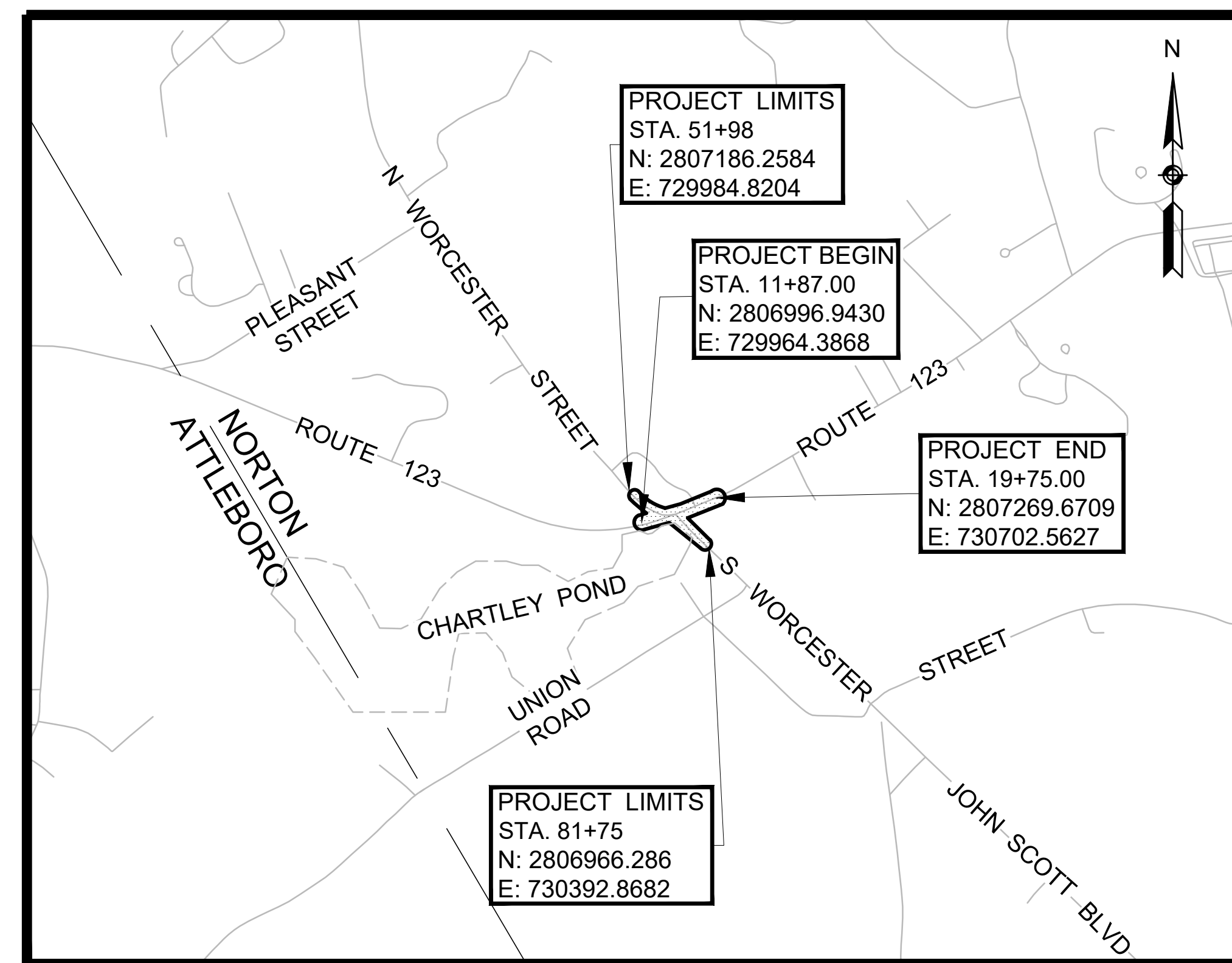
FEDERAL AID PROJECT NO.

THESE PLANS ARE SUPPLEMENTED BY THE OCTOBER 2017 CONSTRUCTION STANDARD DETAILS, THE 2015 OVERHEAD SIGNAL STRUCTURE AND FOUNDATION STANDARD DRAWINGS, MASSDOT TRAFFIC MANAGEMENT PLANS AND DETAIL DRAWINGS, THE 1990 STANDARD DRAWINGS FOR SIGNS AND SUPPORTS, THE 1968 STANDARD DRAWINGS FOR TRAFFIC SIGNALS AND HIGHWAY LIGHTING, AND THE LATEST EDITION OF THE AMERICAN STANDARD FOR NURSERY STOCK.

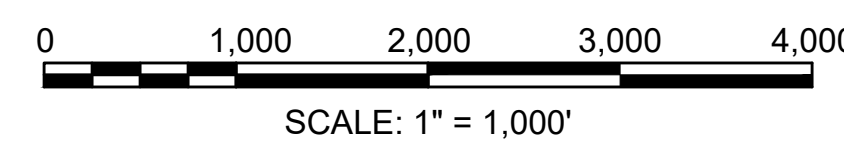
INDEX	
SHEET NO.	DESCRIPTION
1	TITLE SHEET & INDEX
2	LEGEND & ABBREVIATIONS
3-4	TYPICAL SECTIONS & PAVEMENT NOTES
5	CRITICAL PROFILE
6-7	PARCEL SUMMARY
8	LOCATION PLANS
9-11	PROPERTY PLANS

BASE MAP NOTES

1. THE SURVEY BASE PLAN WAS PREPARED BY LIGHTHOUSE LAND SURVEYING, LLC. IN APRIL, 2017. A SUPPLEMENTAL SURVEY WAS PERFORMED IN OCTOBER, 2021.
2. THE MOST RECENT SITE VISIT WAS COMPLETED IN AUGUST, 2021 TO VERIFY THAT THE EXISTING CONDITIONS SHOWN ON THE PLAN ARE THE CURRENT CONDITIONS IN THE FIELD.
3. THE LAYOUT AND PROPERTY LINES SHOWN ON THE PLAN WERE COMPILED FROM EXISTING RECORD DOCUMENTS AND FIELD SURVEY, CERTIFIED BY RICHARD W. REID, JR, A PLS IN DIRECT CHARGE AND SUPERVISION OF THE BASE MAP.
4. THE OWNERS HAVE BEEN CHECKED AND UPDATED AS OF AUGUST, 2021.



PROJECT LOCATION



LENGTH OF PROJECT (ROUTE 123) = 788 FEET = 0.149 MILES

I CERTIFY THAT THE SURVEY AND THE LAYOUT LINES, AS SHOWN HEREON ARE BASED UPON AN ACTUAL ON-THE-GROUND INSTRUMENT SURVEY AND WERE PREPARED IN ACCORDANCE WITH THE PROCEDURAL AND TECHNICAL STANDARDS FOR THE PRACTICE OF LAND SURVEYING IN THE COMMONWEALTH OF MASSACHUSETTS, TITLE 250 CMR 6.00.

PROFESSIONAL LAND SURVEYOR \_\_\_\_\_ DATE \_\_\_\_\_

DATE	DESCRIPTION	REV #
3/24/2023	25% SUBMISSION, REV 1	REV 1
12/10/2021	25% SUBMISSION	REV 0

PREPARED BY:



RECOMMENDED FOR APPROVAL

CHIEF ENGINEER \_\_\_\_\_ DATE \_\_\_\_\_

GENERAL SYMBOLS

EXISTING	PROPOSED	DESCRIPTION
		JERSEY BARRIER
		CATCH BASIN
		CATCH BASIN CURB INLET
		FLAG POLE
		GAS PUMP
		MAIL BOX
		POST SQUARE
		POST CIRCULAR
		WELL
		ELECTRIC HANDHOLE
		FENCE GATE POST
		GAS GATE
		BORING HOLE
		MONITORING WELL
		TEST PIT
		HYDRANT
		LIGHT POLE
		COUNTY BOUND
		GPS POINT
		CABLE MANHOLE
		DRAINAGE MANHOLE
		ELECTRIC MANHOLE
		GAS MANHOLE
		MISC MANHOLE
		SEWER MANHOLE
		TELEPHONE MANHOLE
		WATER MANHOLE
		MASSACHUSETTS HIGHWAY BOUND
		MONUMENT
		STONE BOUND
		TOWN OR CITY BOUND
		TRAVERSE OR TRIANGULATION STATION
		TROLLEY POLE OR GUY POLE
		TRANSMISSION POLE
		UTILITY POLE W/ FIREBOX
		UTILITY POLE WITH DOUBLE LIGHT
		UTILITY POLE W / 1 LIGHT
		UTILITY POLE
		BUSH
		TREE
		STUMP
		SWAMP / MARSH
		WATER GATE
		PARKING METER
		OVERHEAD CABLE/WIRE
		CURBING
		CONTOURS (ON-THE-GROUND SURVEY DATA)
		CONTOURS (PHOTOGRAMMETRIC DATA)
		UNDERGROUND DRAIN PIPE (DOUBLE LINE 24 INCH AND OVER)
		UNDERGROUND ELECTRIC DUCT (DOUBLE LINE 24 INCH AND OVER)
		UNDERGROUND GAS MAIN (DOUBLE LINE 24 INCH AND OVER)
		UNDERGROUND SEWER MAIN (DOUBLE LINE 24 INCH AND OVER)
		UNDERGROUND TELEPHONE DUCT (DOUBLE LINE 24 INCH AND OVER)
		UNDERGROUND WATER MAIN (DOUBLE LINE 24 INCH AND OVER)
		BALANCED STONE WALL
		GUARD RAIL - STEEL POSTS
		GUARD RAIL - WOOD POSTS
		CHAIN LINK OR METAL FENCE
		WOOD FENCE
		HAY BALES/SILT FENCE
		TREE LINE
		SAWCUT LINE
		TOP OR BOTTOM OF SLOPE
		LIMIT OF EDGE OF PAVEMENT OR COLD PLANE AND OVERLAY
		BANK OF RIVER OR STREAM
		BORDER OF WETLAND
		100 FT WETLAND BUFFER
		200 FT RIVERFRONT BUFFER
		STATE HIGHWAY LAYOUT
		TOWN OR CITY LAYOUT
		COUNTY LAYOUT
		RAILROAD SIDELINE
		TOWN OR CITY BOUNDARY LINE
		PROPERTY LINE OR APPROXIMATE PROPERTY LINE
		EASEMENT

TRAFFIC SYMBOLS

EXISTING	PROPOSED	DESCRIPTION
		CONTROLLER PHASE ACTUATED
		TRAFFIC SIGNAL HEAD (SIZE AS NOTED)
		WIRE LOOP DETECTOR (6' x 6' TYP UNLESS OTHERWISE SPECIFIED)
		VIDEO DETECTION CAMERA
		MICROWAVE DETECTOR
		PEDESTRIAN PUSH BUTTON, SIGN (DIRECTIONAL ARROW AS SHOWN) AND SADDLE
		EMERGENCY PREEMPTION CONFIRMATION STROBE LIGHT
		VEHICULAR SIGNAL HEAD
		VEHICULAR SIGNAL HEAD, OPTICALLY PROGRAMMED
		FLASHING BEACON
		PEDESTRIAN SIGNAL HEAD, (TYPE AS NOTED OR AS SPECIFIED)
		RAILROAD SIGNAL
		SIGNAL POST AND BASE (ALPHA-NUMERIC DESIGNATION NOTED)
		MAST ARM, SHAFT AND BASE (ARM LENGTH AS NOTED)
		HIGH MAST POLE OR TOWER
		SIGN AND POST
		SIGN AND POST (2 POSTS)
		MAST ARM WITH LUMINAIRE
		OPTICAL PRE-EMPTION DETECTOR
		CONTROL CABINET, GROUND MOUNTED
		CONTROL CABINET, POLE MOUNTED
		FLASHING BEACON CONTROL AND METER PEDESTAL
		LOAD CENTER ASSEMBLY
		PULL BOX 12"x12" (OR AS NOTED)
		ELECTRIC HANDHOLE 12"x24" (OR AS NOTED)
		TRAFFIC SIGNAL CONDUIT

PAVEMENT MARKINGS SYMBOLS

EXISTING	PROPOSED	DESCRIPTION
		PAVEMENT ARROW - WHITE
		LEGEND "ONLY" - WHITE
		STOP LINE - 12" WHITE LINE 4' BEHIND CW (TYP)
		CROSSWALK, 2 - 12" WHITE LINES (WIDTH VARIES)
		SOLID WHITE LINE - 6"
		SOLID WHITE GORE LINE - 12" @ 45" (SPACING NOTED)
		SOLID WHITE CHANNELIZING LINE - 12" (SPACING NOTED)
		SOLID YELLOW LINE - 6"
		SOLID YELLOW GORE LINE - 12" @ 45" (SPACING NOTED)
		BROKEN WHITE LINE - 6" (10' LINE, 30' GAP)
		BROKEN YELLOW LINE - 6" (10' LINE, 30' GAP)
		DOTTED WHITE LINE EXTENSION - 6" LINE (2' LINE, 6" GAP)
		DOUBLE YELLOW LINE - 2 - 6" LINES

PROJECT DESCRIPTION:

THE PURPOSE OF THIS PROJECT IS TO IMPROVE TRAFFIC OPERATION AND SAFETY FOR ALL USERS AT THE INTERSECTION OF ROUTE 123 (WEST MAIN STREET) AT NORTH WORCESTER STREET AND SOUTH WORCESTER STREET. PROPOSED IMPROVEMENTS INCLUDE THE INSTALLATION OF A NEW FULLY ACTUATED TRAFFIC SIGNAL SYSTEM WITH NECESSARY CONDUIT, SIGNAL EQUIPMENT, VEHICLE DETECTION, AND RELATED SIGNING AND PAVEMENT MARKINGS. OTHER PROPOSED IMPROVEMENTS INCLUDE ROADWAY WIDENING WITH AREAS OF FULL DEPTH CONSTRUCTION AND PAVEMENT MILLING AND OVERLAY, SIDEWALK CONSTRUCTION, BICYCLE ACCOMMODATIONS AND NEW SIGNS AND PAVEMENT MARKINGS.

ABBREVIATIONS

GENERAL	DESCRIPTION
AADT	ANNUAL AVERAGE DAILY TRAFFIC
ABAN	ABANDON
ADJ	ADJUST
APPROX.	APPROXIMATE
A.C.	ASPHALT CONCRETE
ACCM PIPE	ASPHALT COATED CORRUGATED METAL PIPE
BIT.	BITUMINOUS
BC	BOTTOM OF CURB
BD.	BOUND
BL	BASELINE
BLDG	BUILDING
BM	BENCHMARK
BO	BY OTHERS
BOS	BOTTOM OF SLOPE
BR.	BRIDGE
CB	CATCH BASIN
CBCI	CATCH BASIN WITH CURB INLET
CC	CEMENT CONCRETE
CCM	CEMENT CONCRETE MASONRY
CEM	CEMENT
CI	CURB INLET
CIP	CAST IRON PIPE
CLF	CHAIN LINK FENCE
CL	CENTERLINE
CMP	CORRUGATED METAL PIPE
CSP	CORRUGATED STEEL PIPE
CO.	COUNTY
CONC	CONCRETE
CONT	CONTINUOUS
CONST	CONSTRUCTION
CR GR	CROWN GRADE
DHV	DESIGN HOURLY VOLUME
DI	DROP INLET
DIA	DIAMETER
DIP	DUCTILE IRON PIPE
DW	STEADY DON'T WALK - PORTLAND ORANGE
DWY	DRIVEWAY
ELEV (or EL.)	ELEVATION
EMB	EMBANKMENT
EOP	EDGE OF PAVEMENT
EXIST (or EX)	EXISTING
EXC	EXCAVATION
F&C	FRAME AND COVER
F&G	FRAME AND GRATE
FDN.	FOUNDATION
FLDSTN	FIELDSTONE
GAR	GARAGE
GD	GROUND
GG	GAS GATE
GI	GUTTER INLET
GIP	GALVANIZED IRON PIPE
GRAN	GRANITE
GRAV	GRAVEL
GRD	GUARD
HDW	HEADWALL
HMA	HOT MIX ASPHALT
HOR	HORIZONTAL
HYD	HYDRANT
INV	INVERT
JCT	JUNCTION
L	LENGTH OF CURVE
LB	LEACH BASIN
LP	LIGHT POLE
LT	LEFT
MAX	MAXIMUM
MB	MAILBOX
MH	MANHOLE
MHB	MASSACHUSETTS HIGHWAY BOUND
MIN	MINIMUM
NIC	NOT IN CONTRACT
NO.	NUMBER
O.C.	ON CENTER
PC	POINT OF CURVATURE
PCC	POINT OF COMPOUND CURVATURE
P.G.L.	PROFILE GRADE LINE
PI	POINT OF INTERSECTION
POC	POINT ON CURVE
POT	POINT ON TANGENT
PRC	POINT OF REVERSE CURVATURE
PROJ	PROJECT
PROP	PROPOSED
PSB	PLANTABLE SOIL BORROW
PT	POINT OF TANGENCY
PVC	POINT OF VERTICAL CURVATURE
PVI	POINT OF VERTICAL INTERSECTION
PVT	POINT OF VERTICAL TANGENCY
PVMT	PAVEMENT

NORTON  
ROUTE 123 AT N-S WORCESTER STREET

STATE	FED. AID PROJ. NO.	SHEET NO.	TOTAL SHEETS
MA	-	2	11

PROJECT FILE NO. 609193

PRELIMINARY RIGHT OF WAY  
LEGEND, ABBREVIATIONS & PROJECT DESCRIPTION

ABBREVIATIONS (cont.)

GENERAL	DESCRIPTION
PWW	PAVED WATER WAY
R	RADIUS OF CURVATURE
R&D	REMOVE AND DISPOSE
RCP	REINFORCED CONCRETE PIPE
RD	ROAD
RDWY	ROADWAY
REM	REMOVE
RET	RETAIN
RET WALL	RETAINING WALL
ROW	RIGHT OF WAY
RR	RAILROAD
R&R	REMOVE AND RESET
R&S	REMOVE AND STACK
RT	RIGHT
SB	STONE BOUND
SHLD	SHOULDER
SMH	SEWER MANHOLE
ST	STREET
STA	STATION
SSD	STOPPING SIGHT DISTANCE
SHLO	STATE HIGHWAY LAYOUT LINE
SW	SIDEWALK
T	TANGENT DISTANCE OF CURVE/TRUCK %
TAN	TANGENT
TEMP	TEMPORARY
TC	TOP OF CURB
TOS	TOP OF SLOPE
T.S.	TRAFFIC SIGNAL
TYP	TYPICAL
UP	UTILITY POLE
VAR	VARIES
VERT	VERTICAL
VC	VERTICAL CURVE
WCR	WHEEL CHAIR RAMP
WG	WATER GATE
WIP	WROUGHT IRON PIPE
WM	WATER METER/WATER MAIN
X-SECT	CROSS SECTION

TRAFFIC SIGNAL ABBREVIATIONS

CAB	CABINET
CCVE	CLOSED CIRCUIT VIDEO EQUIPMENT
DW	STEADY UPRAISED HAND
FDW	FLASHING UPRAISED HAND
FR	FLASHING CIRCULAR RED
FRL	FLASHING RED LEFT ARROW
FRR	FLASHING RED RIGHT ARROW
FYL	FLASHING CIRCULAR YELLOW
FYL	FLASHING YELLOW LEFT ARROW
FYR	FLASHING YELLOW RIGHT ARROW
G	STEADY CIRCULAR GREEN
GL	STEADY GREEN LEFT ARROW
GR	STEADY GREEN RIGHT ARROW
GSL	STEADY GREEN SLASH LEFT ARROW
GSR	STEADY GREEN SLASH RIGHT ARROW
GV	STEADY GREEN VERTICAL ARROW
OL	OVERLAP
PED	PEDESTRIAN
PTZ	PAN, TILT, ZOOM
R	STEADY CIRCULAR RED
RL	STEADY RED LEFT ARROW
RR	STEADY RED RIGHT ARROW
TR SIG	TRAFFIC SIGNAL
TSC	TRAFFIC SIGNAL CONDUIT
W	STEADY WALKING PERSON
Y	STEADY CIRCULAR YELLOW
YL	STEADY YELLOW LEFT ARROW

**NORTON**  
**ROUTE 123 AT N-S WORCESTER STREET**

STATE	FED. AID PROJ. NO.	SHEET NO.	TOTAL SHEETS
MA	-	3	11
PROJECT FILE NO.		609193	

**PRELIMINARY RIGHT OF WAY**  
**TYPICAL SECTIONS & PAVEMENT NOTES**

**PAVEMENT NOTES**

**PAVEMENT MILLING AND OVERLAY**

- SURFACE COURSE:** 1-3/4" SUPERPAVE SURFACE COURSE 12.5 (SSC-12.5) OVER ASPHALT EMULSION FOR TACK COAT OVER
- INTERMEDIATE:** 1-3/4" SUPERPAVE SURFACE COURSE 12.5 (SSC-12.5) OVER ASPHALT EMULSION FOR TACK COAT OVER
- PAVEMENT MILLING:** 1-3/4" PAVEMENT FINE MILLING
- LEVELING COURSE:** SUPERPAVE LEVELING COURSE - 12.5 (SLC-12.5)

**FULL DEPTH PAVEMENT CONSTRUCTION**

- SURFACE COURSE:** 1-3/4" SUPERPAVE SURFACE COURSE 12.5 (SSC-12.5) OVER ASPHALT EMULSION FOR TACK COAT OVER
- INTERMEDIATE:** 1-3/4" SUPERPAVE INTERMEDIATE COURSE 19.0 (SIC-19.0) OVER ASPHALT COURSE: EMULSION FOR TACK COAT OVER
- BASE COURSE:** 4" SUPERPAVE BASE COURSE 37.5 (SBC-37.5) OVER
- SUB-BASE:** 4" DENSE GRADED CRUSHED STONE FOR SUB-BASE OVER 8" GRAVEL BORROW (MIN)

**FULL DEPTH PAVEMENT BOX WIDENING ≤4' WIDE**

- SURFACE COURSE:** 1-3/4" SUPERPAVE SURFACE COURSE 12.5 (SSC-12.5) OVER ASPHALT EMULSION FOR TACK COAT OVER
- INTERMEDIATE:** 1-3/4" SUPERPAVE INTERMEDIATE COURSE 19.0 (SIC-19.0) OVER ASPHALT EMULSION FOR TACK COAT OVER
- BASE COURSE:** 6" HES CEMENT CONCRETE BASE COURSE OVER
- SUB-BASE:** 8" GRAVEL BORROW (MIN)

**PROPOSED CEMENT CONCRETE SIDEWALKS, ISLANDS & WHEELCHAIR RAMPS**

- SURFACE:** 4" CEMENT CONCRETE WALK SURFACE  
4000 PSI, 3/4", 610 OVER
- FOUNDATION:** 8" GRAVEL BORROW

**PROPOSED HMA SIDEWALKS**

- SURFACE:** 1-1/4" SUPERPAVE SURFACE COURSE 9.5 (SSC-9.5) OVER ASPHALT EMULSION FOR TACK COAT OVER  
1-3/4" SUPERPAVE INTERMEDIATE COURSE 12.5 (SIC-12.5) OVER
- FOUNDATION:** 8" GRAVEL BORROW

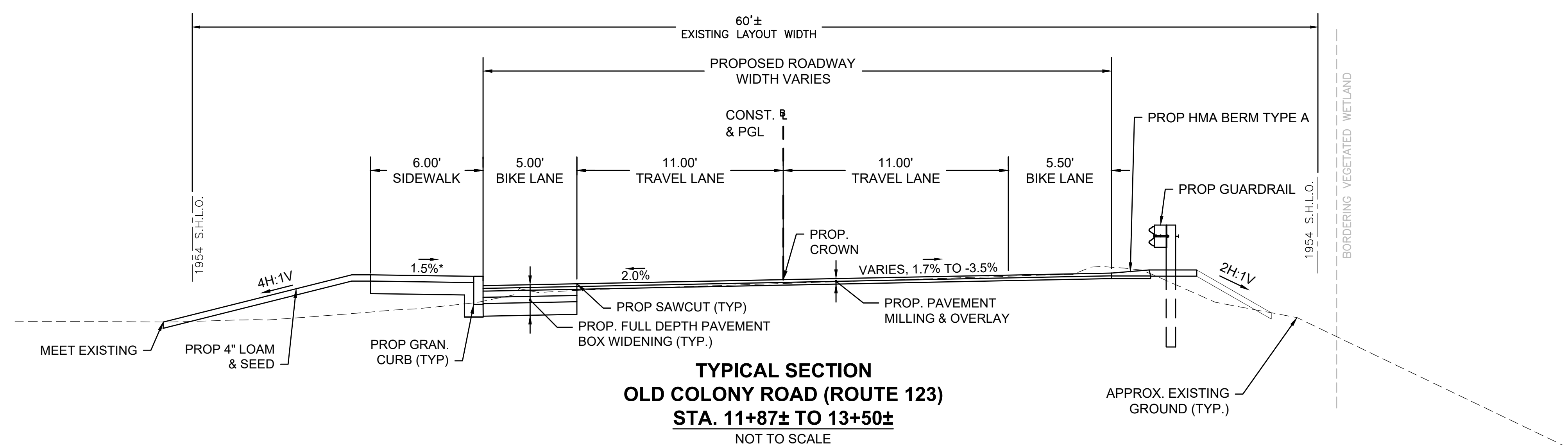
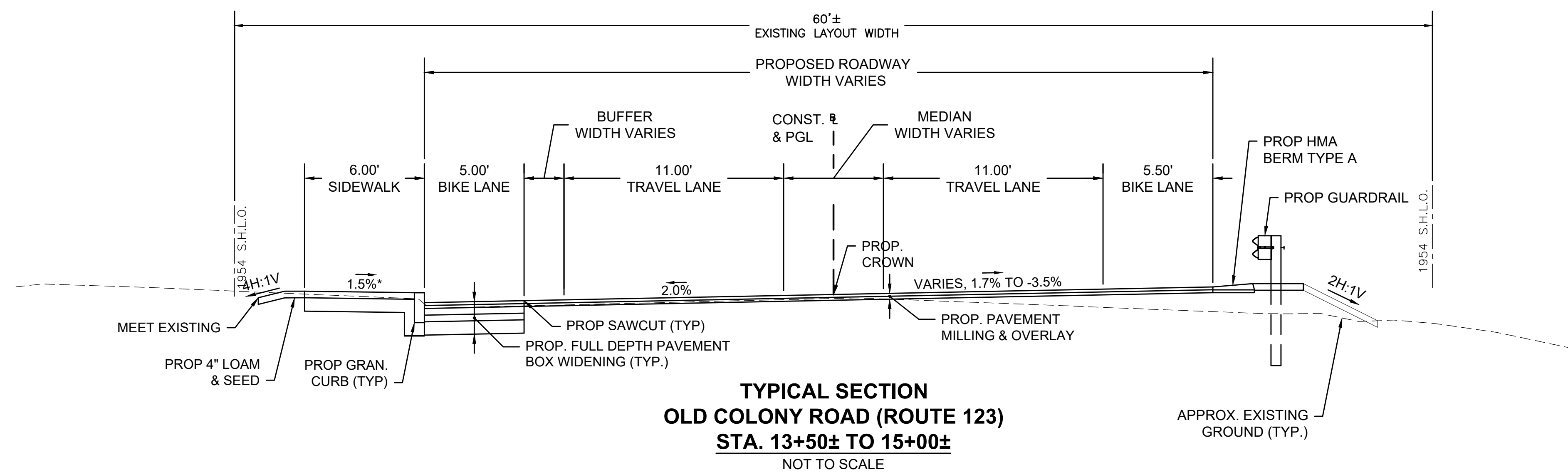
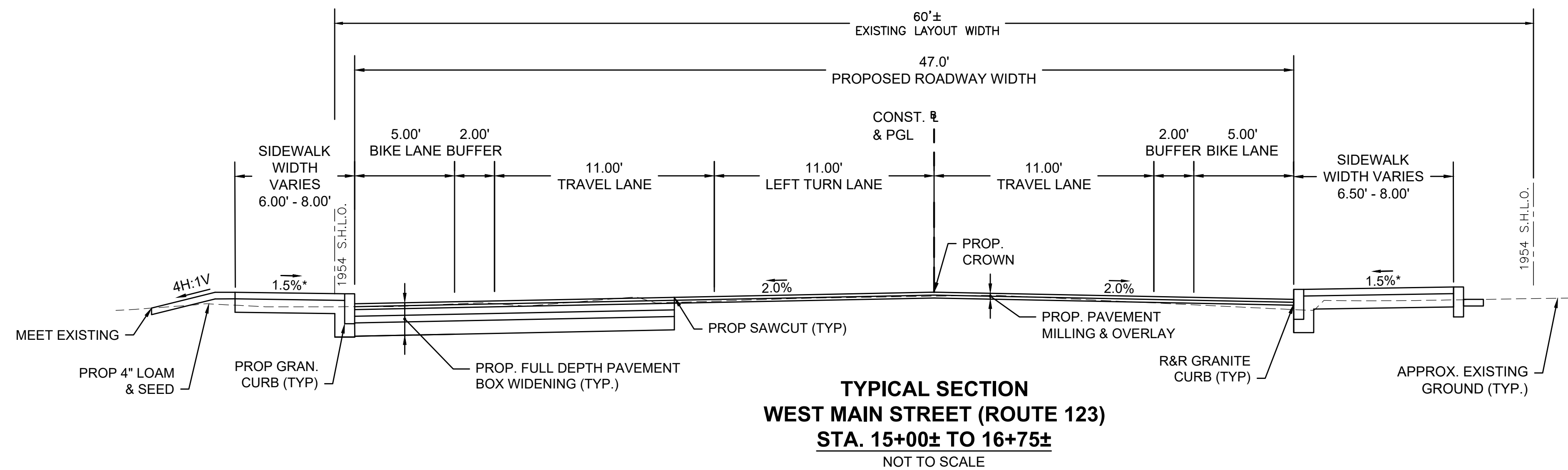
**HMA DRIVEWAYS**

- SURFACE:** 1-1/2" SUPERPAVE SURFACE COURSE 9.5 (SSC-9.5) OVER  
2-1/2" SUPERPAVE INTERMEDIATE COURSE 12.5 (SIC-12.5) OVER
- BASE COURSE:\*\*** 8" GRAVEL BORROW OR 8" RECLAIM BASE

**PROJECT TACK COAT NOTES**

- TACK COAT:** ASPHALT EMULSION FOR TACK COAT, GRADE RS-1 SHALL BE PLACED AT A RATE OF:  
0.08 GALLONS PER SQUARE YARD OVER MILLED SURFACES  
0.07 GALLONS PER SQUARE YARD OVER CEMENT CONCRETE BASE COURSE  
0.07 GALLONS PER SQUARE YARD OVER SMOOTH TIGHT PAVEMENTS PRIOR TO PAVING AN OVERLAY

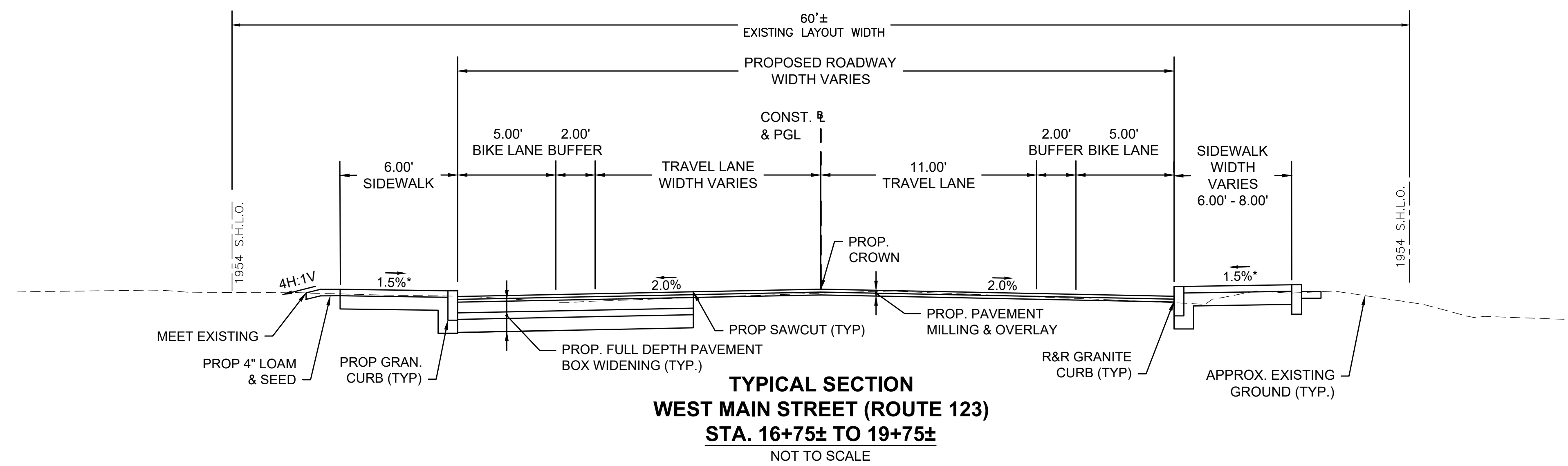
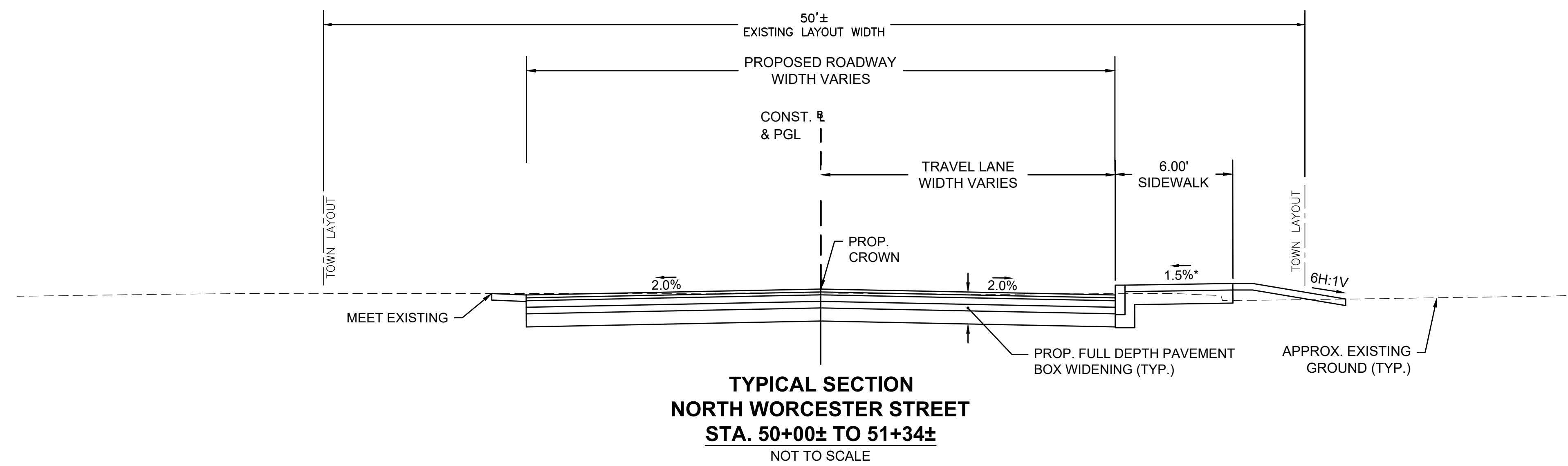
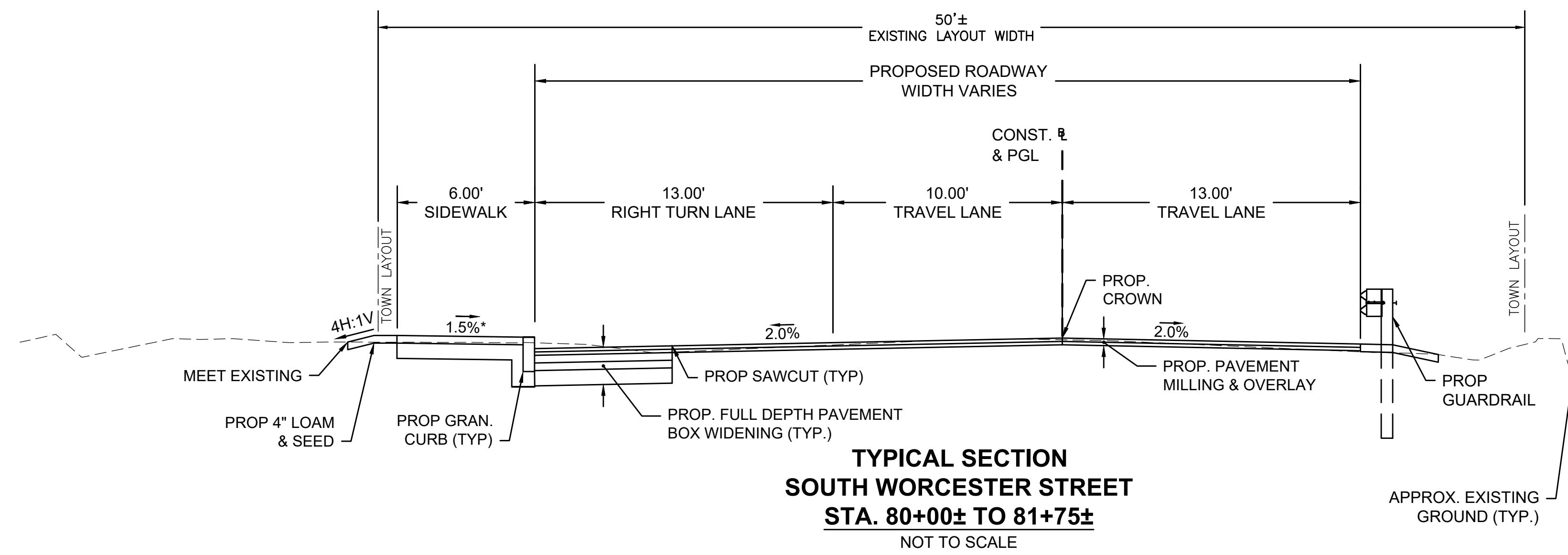
\* TOLERANCE FOR CONSTRUCTION ±0.5%



**NORTON**  
**ROUTE 123 AT N-S WORCESTER STREET**

STATE	FED. AID PROJ. NO.	SHEET NO.	TOTAL SHEETS
MA	-	4	11
PROJECT FILE NO.		609193	

**PRELIMINARY RIGHT OF WAY**  
**TYPICAL SECTIONS & PAVEMENT NOTES**

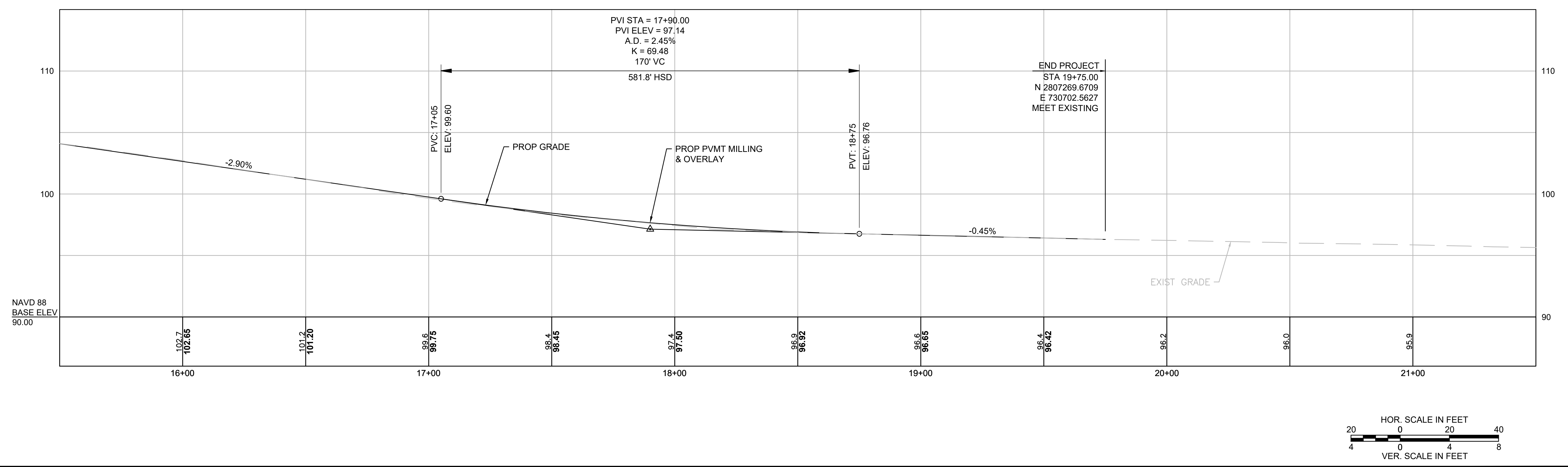
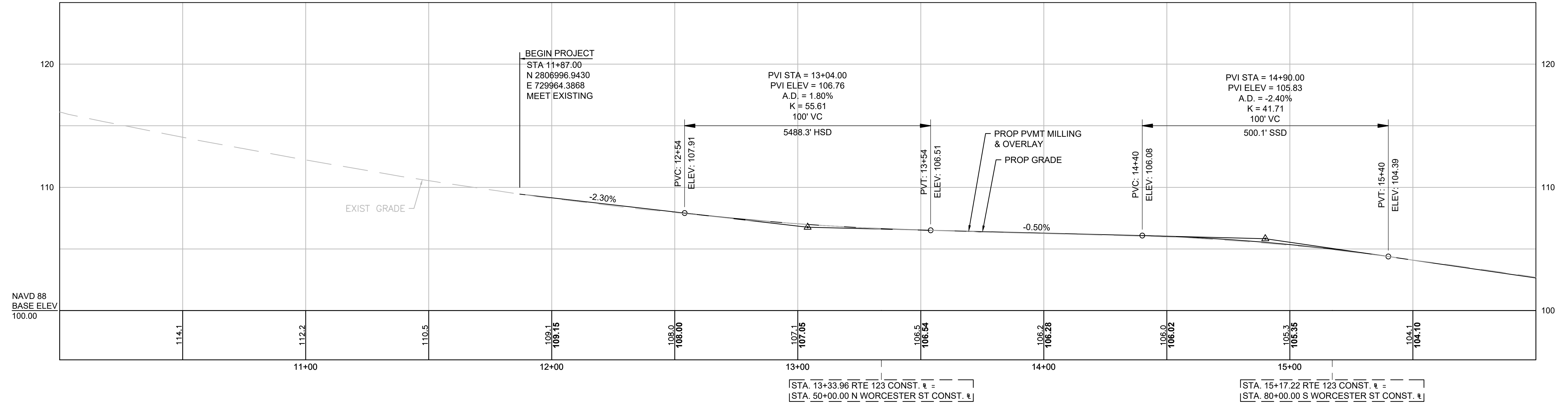


\* TOLERANCE FOR CONSTRUCTION ±0.5%

**NORTON**  
**ROUTE 123 AT N-S WORCESTER STREET**

STATE	FED. AID PROJ. NO.	SHEET NO.	TOTAL SHEETS
MA	-	5	11
PROJECT FILE NO.		609193	

**PRELIMINARY RIGHT OF WAY**  
**CRITICAL PROFILE**  
**ROUTE 123**  
**SHEET 1 OF 1**



**NORTON  
ROUTE 123 AT N-S WORCESTER STREET**

STATE	FED. AID PROJ. NO.	SHEET NO.	TOTAL SHEETS
MA	-	6	11
PROJECT FILE NO.		609193	

**PRELIMINARY RIGHT OF WAY  
PARCEL SUMMARY SHEET**

PARCEL NO.	PLAN SHEET NO.	TITLEHOLDER	TITLE REFERENCE				TAKEN		EASEMENT		TOTAL TAKEN	REMAINING	TOTAL PROPERTY AREA (S.F.)	FRONTAGE ON ROW PLAN (FT)	PROPERTY ADDRESS	REMARKS	LAND RESTRICTIONS FROM DEED
			DEED BOOK	PAGE NO.	L.C. CASE NO.	CERT. NO.	CITY	STATE	TYPE	AREA							
X-D-1	9	NELSON CHARLES W JR & HELEN I	22128	71					201					339 OLD COLONY ROAD	EXISTING DRAIN OUTLET		
X-PUE-3	9	NELSON CHARLES W JR & HELEN I	22128	71					82						GUY WIRE		
X-1	9	LUCILE P. DRANE LIVING TRUST	23506	284			99			99	8,405	8,504	54	274 EAST MAIN STREET			
X-PUE-4	9	LUCILE P. DRANE LIVING TRUST	23506	284					573						OVERHEAD UTILITIES		
X-TE-1	9	LUCILE P. DRANE LIVING TRUST	23506	284					1,053						GRADING (MAX 3:1), LOAM & SEEDING		
X-TE-14	9	LUCILE P. DRANE LIVING TRUST	23506	284					270						ELECTRIC SERVICE RELOCATION		
X-2-T	9	TOWN OF NORTON	1982	142			16			16	1,816,049	1,816,065	32	70 EAST MAIN STREET			
X-D-2	9	TOWN OF NORTON	1982	142					100						EXISTING DRAIN OUTLET		
X-GR-PUE-5	9	TOWN OF NORTON	1982	142					285						GUARDRAIL, OVERHEAD UTILITIES		
X-PUE-16	9	TOWN OF NORTON	1982	142					20						GUY WIRE		
X-PUE-17	11	TOWN OF NORTON	1982	142					38						GUY WIRE		
X-TE-4	9	TOWN OF NORTON	1982	142					551						GRADING (MAX 3:1), LOAM & SEEDING		
X-3-T	9,11	CHAD DUBUC TRUSTEE	22151	77			809			809	23,130	23,939	173	320 WEST MAIN STREET			
X-TE-5	9,11	CHAD DUBUC TRUSTEE	22151	77					2,446						GRADING (MAX 3:1), LOAM & SEEDING, DRIVEWAY WORK		
X-PUE-8	9	BARROWSVILLE REALTY, INC	24277	23					556					46 BARROWS STREET	OVERHEAD UTILITIES, UTILITY POLES		
X-TE-13	9	BARROWSVILLE REALTY, INC	24277	23					154						GRADING (MAX 3:1), LOAM & SEEDING		
X-4	9	CHARTLEY PLAZA INC.	24149	277			692			692	29,694	30,386	143	46 BARROWS STREET			
X-PUE-9	9	CHARTLEY PLAZA INC.	24149	277					15						OVERHEAD UTILITIES		
X-PUE-10	9	CHARTLEY PLAZA INC.	24149	277					356						OVERHEAD UTILITIES		
X-PUE-11	9	CHARTLEY PLAZA INC.	24149	277					441						OVERHEAD UTILITIES		
X-TE-3	9	CHARTLEY PLAZA INC.	24149	277					3,252						GRADING (MAX 3:1), LOAM & SEEDING		
X-5	9,10	TOWN OF NORTON	1494	1103			110			110	706,377	706,487	147	70 EAST MAIN STREET			
X-PUE-12	9,10	TOWN OF NORTON	1494	1103					1,207						OVERHEAD UTILITIES		
X-TE-6	9,10	TOWN OF NORTON	1494	1103					1,739						GRADING (MAX 3:1), LOAM & SEEDING, DRIVEWAY WORK		
X-D-4	10,11	PAUL W. & CHARLENE B. ELLIOT	17342	255					106					316 WEST MAIN STREET	EXISTING HEADWALL		
X-PUE-14	10,11	PAUL W. & CHARLENE B. ELLIOT	17342	255					1,866						OVERHEAD UTILITIES		
X-TE-7	10,11	PAUL W. & CHARLENE B. ELLIOT	17342	255					338						GRADING (MAX 3:1), LOAM & SEEDING		
X-TE-12	10,11	PAUL W. & CHARLENE B. ELLIOT	17342	255					89						GRADING (MAX 3:1), LOAM & SEEDING		
X-PUE-13	10	VANESSA ALCIDE	23766	48					117					313 WEST MAIN STREET	GUY WIRE		
X-TE-10	10	VANESSA ALCIDE	23766	48					110						GRADING (MAX 3:1), LOAM & SEEDING		
X-TE-11	10	VANESSA ALCIDE	23766	48					114						GRADING (MAX 3:1), LOAM & SEEDING, DRIVEWAY WORK		
X-PUE-15	10,11	LOKITIS MICHAEL P & JENNIFER W	5663	200					44					308 WEST MAIN STREET	GUY WIRE		
X-PUE-18	11	OWNER UNKNOWN							151					308 WEST MAIN STREET	EXISTING OVERHEAD UTILITIES		
X-PUE-19	11	SINCLAIR REALTY LLC	20130	220					352						EXISTING GUY WIRE, EXISTING UTILITY POLE, EXISTING OVERHEAD UTILITIES		

**NORTON  
ROUTE 123 AT N-S WORCESTER STREET**

STATE	FED. AID PROJ. NO.	SHEET NO.	TOTAL SHEETS
MA	-	6	11
PROJECT FILE NO.		609193	

**PRELIMINARY RIGHT OF WAY  
PARCEL SUMMARY SHEET**

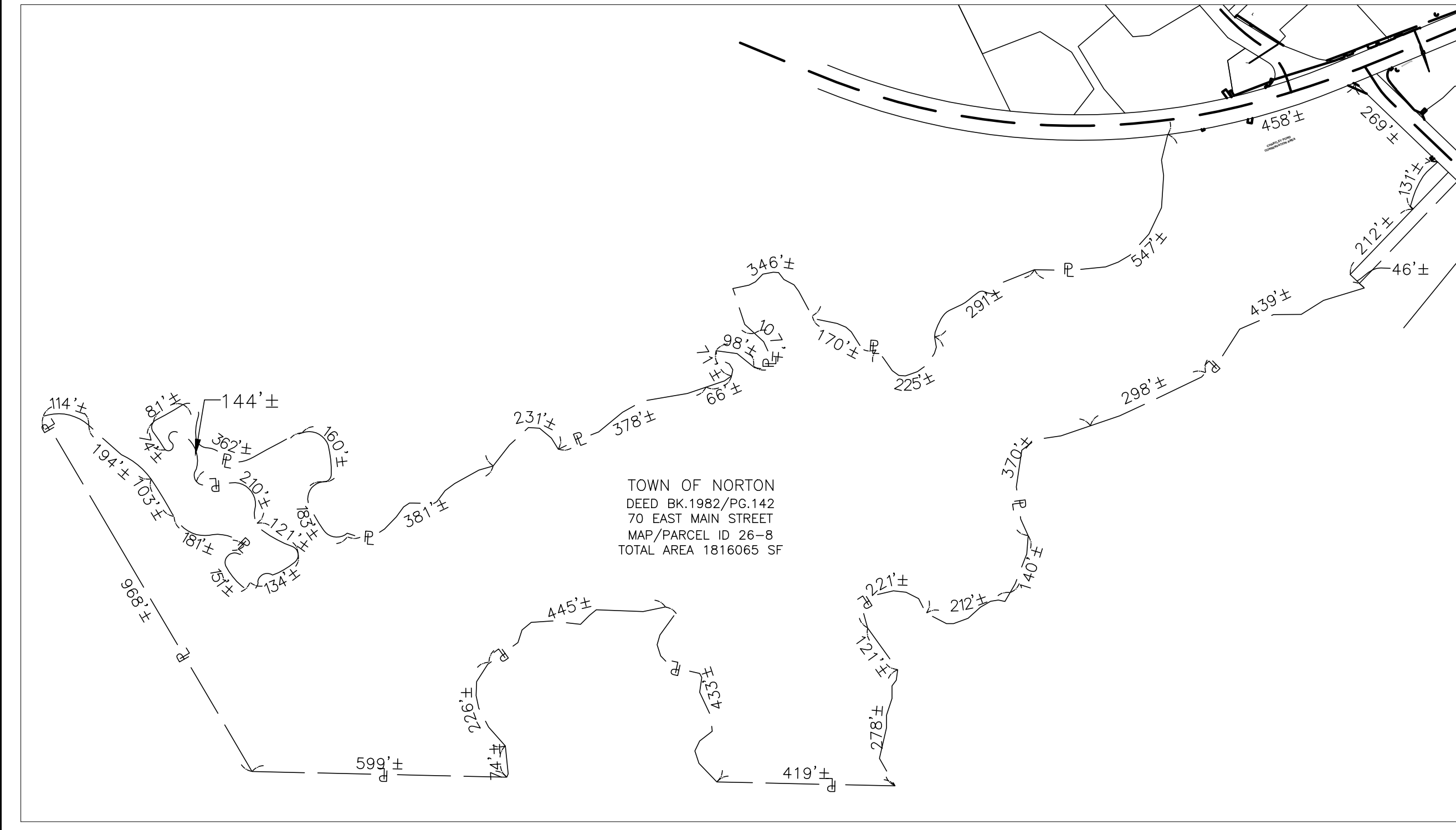
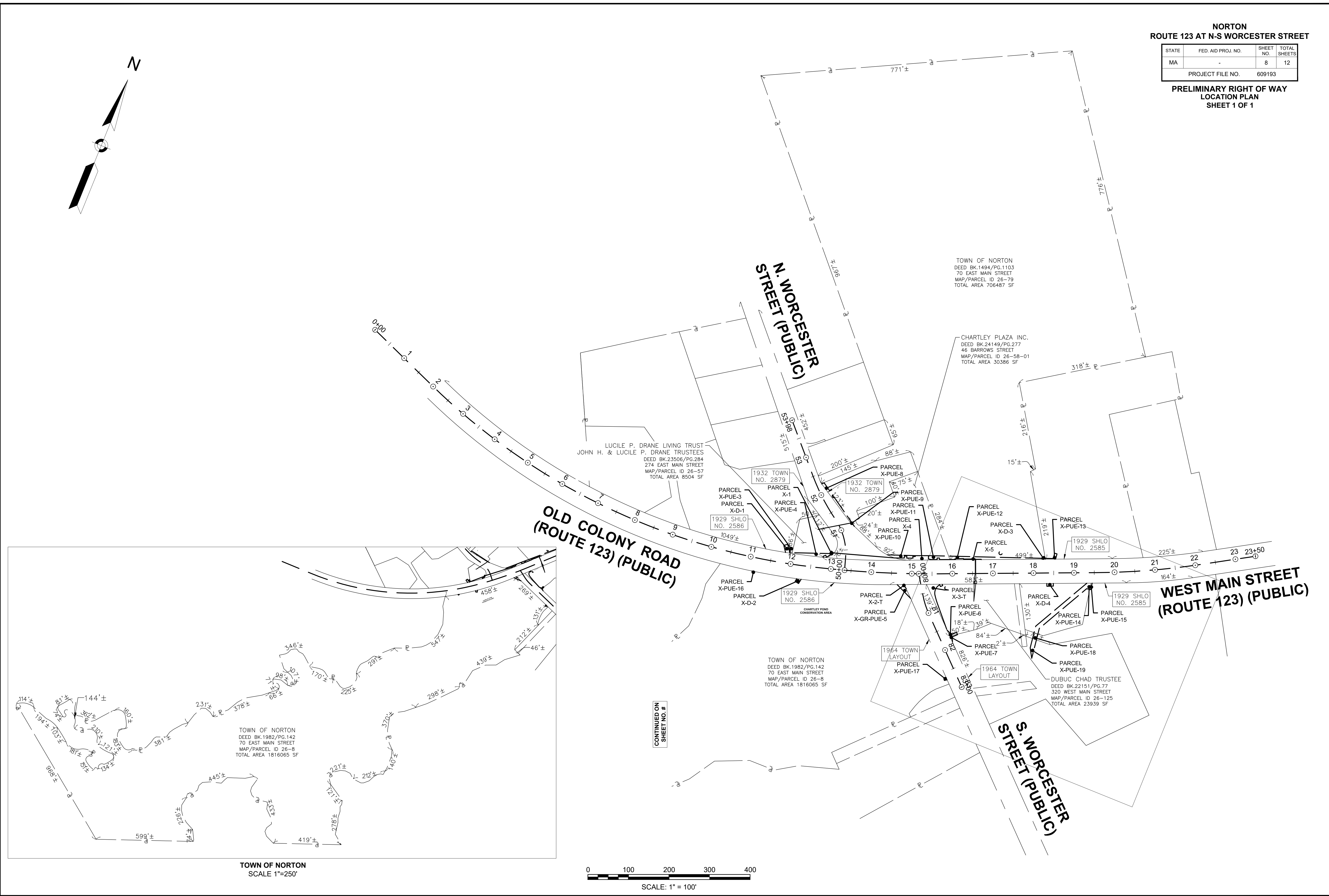
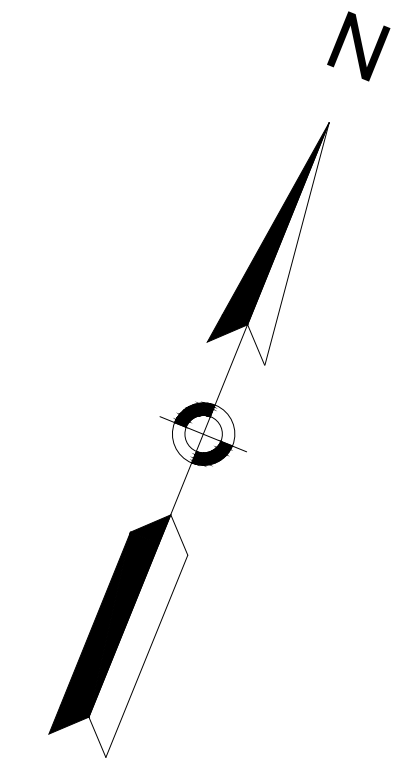
TOWN OF NORTON																	
PARCEL NO.	PLAN SHEET NO.	TITLEHOLDER	TITLE REFERENCE				TAKEN		EASEMENT		TOTAL TAKEN	REMAINING	TOTAL PROPERTY AREA (S.F.)	FRONTAGE ON ROW PLAN (FT)	PROPERTY ADDRESS	REMARKS	LAND RESTRICTIONS FROM DEED
			DEED BOOK	PAGE NO.	L.C. CASE NO.	CERT. NO.	CITY	STATE	TYPE	AREA							
TE-2	7	BARROWSVILLE REALTY INC.	24277	23					TEMP	557				46 BARROWS STREET	GRADING (MAX 3:1), LOAM & SEEDING, DRIVEWAY WORK		
PUE-6	8	CHAD DUBUC TRUSTEE	22151	77					PERM	101				320 WEST MAIN STREET	GUY WIRE, OVERHEAD UTILITIES		
PUE-7	8	SINCLAIR REALTY LLC	20130	220					PERM	82					GUY WIRE, UTILITY POLE		
TE-9	8	SINCLAIR REALTY LLC	20130	220					TEMP	243					DRIVEWAY WORK		

**NORTON**  
**ROUTE 123 AT N-S WORCESTER STREET**

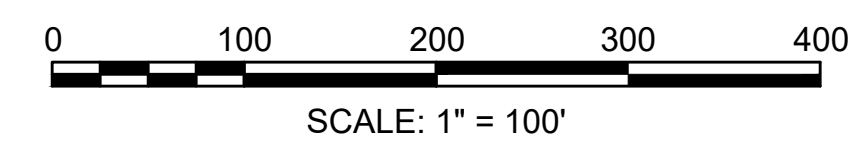
STATE	FED. AID PROJ. NO.	SHEET NO.	TOTAL SHEETS
MA	-	8	12
PROJECT FILE NO.		609193	

**PRELIMINARY RIGHT OF WAY**  
**LOCATION PLAN**  
**SHEET 1 OF 1**

609193\_R\W6581 LOC PLAN.DWG Plotted on 24-Mar-2023 1:53 PM



**TOWN OF NORTON**  
**SCALE 1"=250'**



CONTINUED ON  
SHEET NO. #

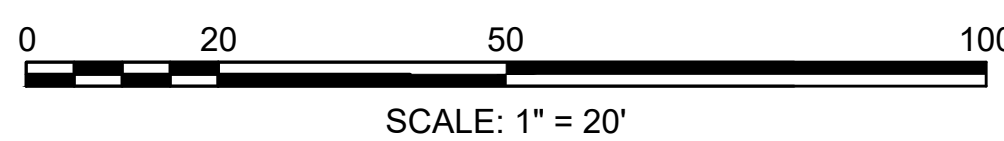
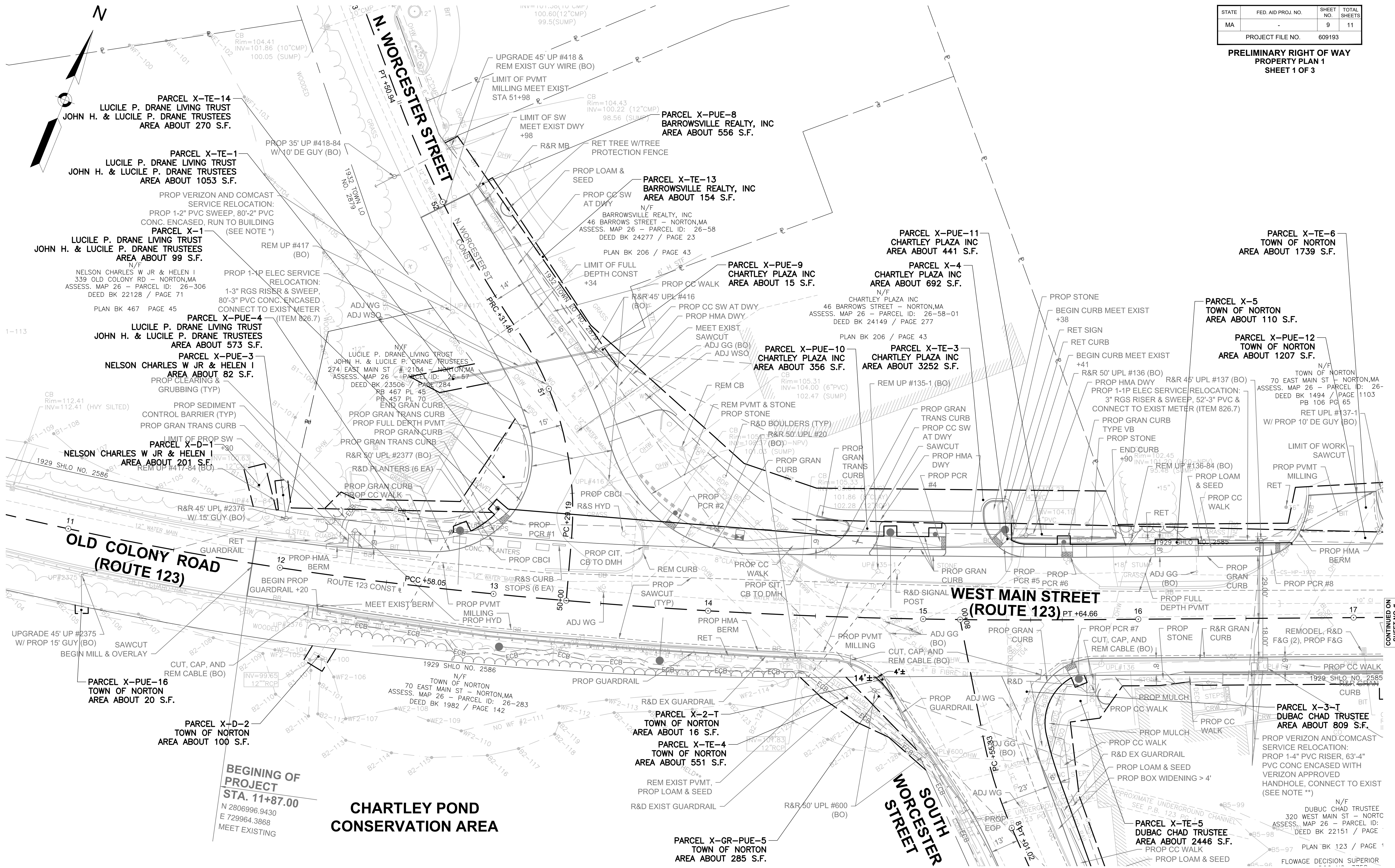
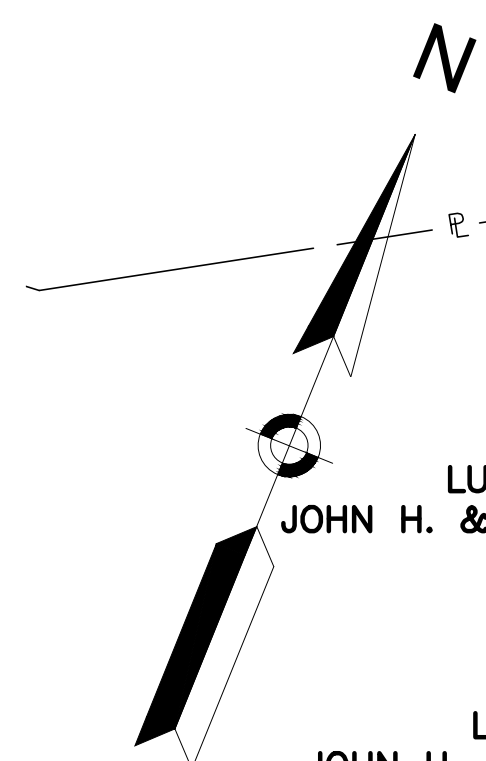


**NORTON**  
**ROUTE 123 AT N-S WORCESTER STREET**

STATE	FED. AID PROJ. NO.	SHEET NO.	TOTAL SHEETS
MA		9	11

PROJECT FILE NO. 609193

**PRELIMINARY RIGHT OF WAY**  
**PROPERTY PLAN 1**  
**SHEET 1 OF 3**



CONTINUED ON SHEET NO. #

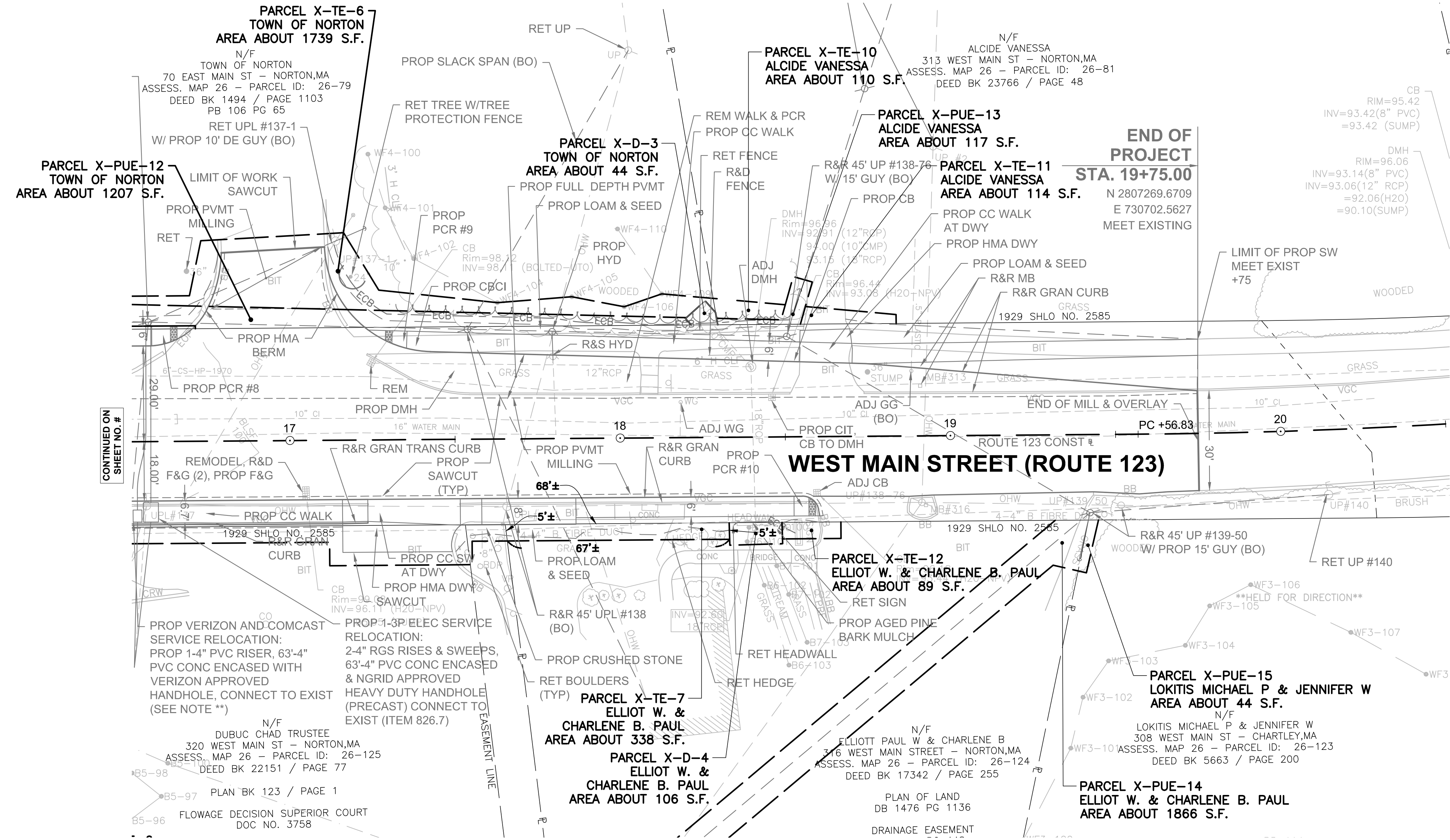
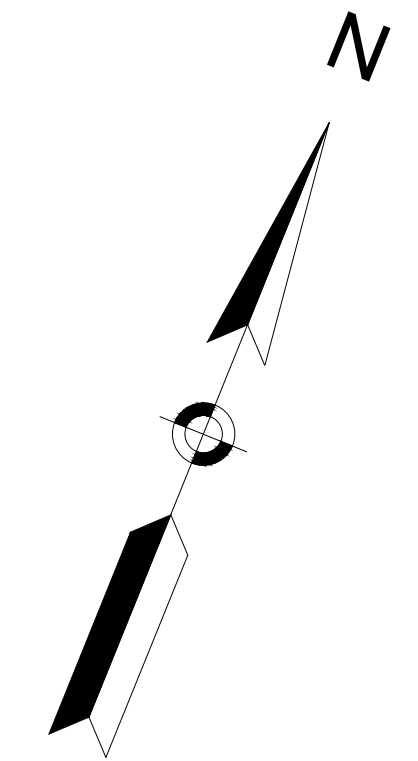
FOR FURTHER SEE SHEET #

609193\_RV(658) (PROP PLAN).DWG Plotted on 24-Mar-2023 1:53 PM

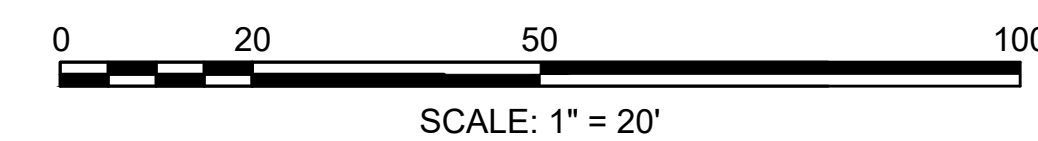
NORTON  
ROUTE 123 AT N-S WORCESTER STREET

STATE	FED. AID PROJ. NO.	SHEET NO.	TOTAL SHEETS
MA	-	10	11
PROJECT FILE NO.		609193	

PRELIMINARY RIGHT OF WAY  
PROPERTY PLAN 2  
SHEET 2 OF 3



CONTINUED ON SHEET NO. #

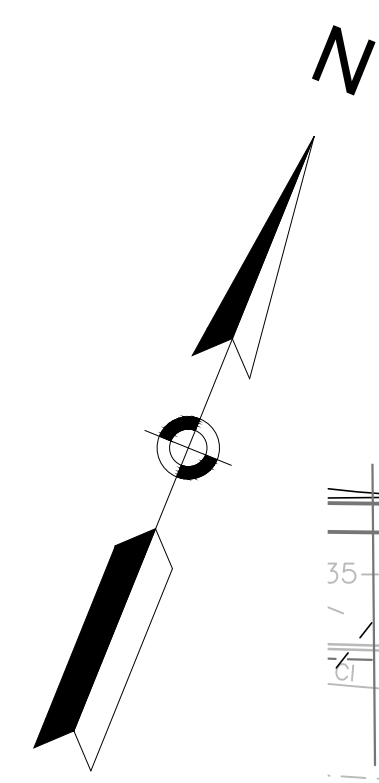


FOR PROFILE SEE SHEET #

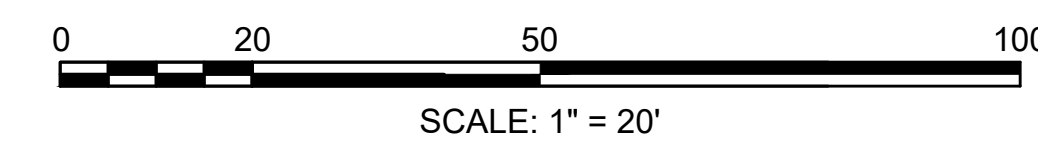
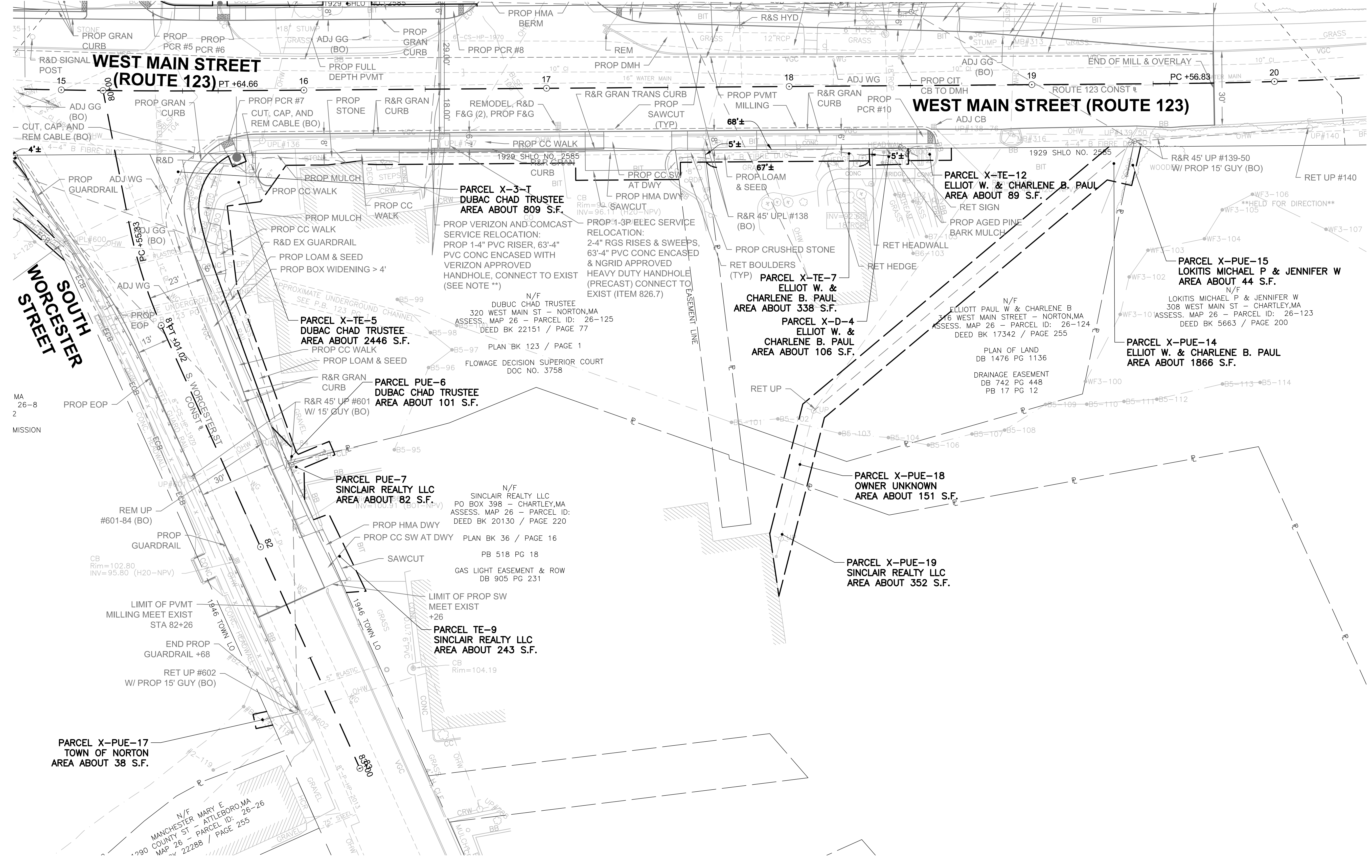
**NORTON**  
**ROUTE 123 AT N-S WORCESTER STREET**

STATE	FED. AID PROJ. NO.	SHEET NO.	TOTAL SHEETS
MA	-	11	11
PROJECT FILE NO.		609193	

**PRELIMINARY RIGHT OF WAY**  
**PROPERTY PLAN 3**  
**SHEET 3 OF 3**



CONTINUED ON  
 SHEET NO. 10



FOR PROFILE SEE SHEET #

609193\_RV(658) PROP PLAN.DWG Plotted on 24-Mar-2023 1:53 PM